

Control head system – type 251 – Palm Beach

Technical data	
Design	CAN bus suitable control head system
Operating temperature	-25°C to +70°C
Weight	see table
Power supply	via CAN-bus cable
Protection	IP66 acc. to IEC 529 (DINVDE 0470)



→ The control head – type 251
is transmitting signals to the MPC for reversing gear propulsion systems with detents in positions O (neutral), I (ahead) and II (astern).

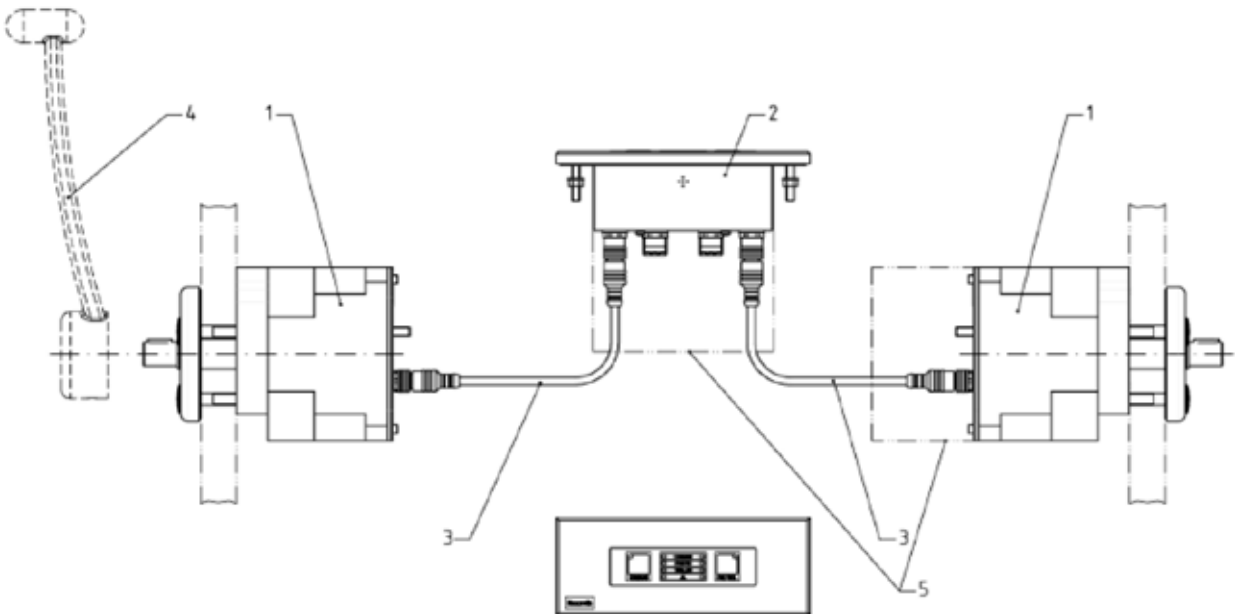
Type numbers					
Device	Figure	Special	Number of engines / levers	Weight [kg]	Type number
Control head system 251*	1	2 × control head type 251 1 × control unit type 251 2 × cable M12, 2m	2/ 2*	5,1 kg	R417 001 064
Control head type 251*	2	-			R417 001 067
Operating and indication module type 251	3	-			R417 000 215

*handle for control head has to be ordered separately

Accessories			
Device	Figure	Description	Type number
Handle	4	Handle for control head type 251	R417 000 107
Handle	4	Handle for control head type 251 with buttons	R431 001 441
Cable	-	Cable to connect the control head to the operation module	R419 800 155

Spare parts		
Device	Description	Type number
Spare parts	-	on request

Figure 1 – system overview

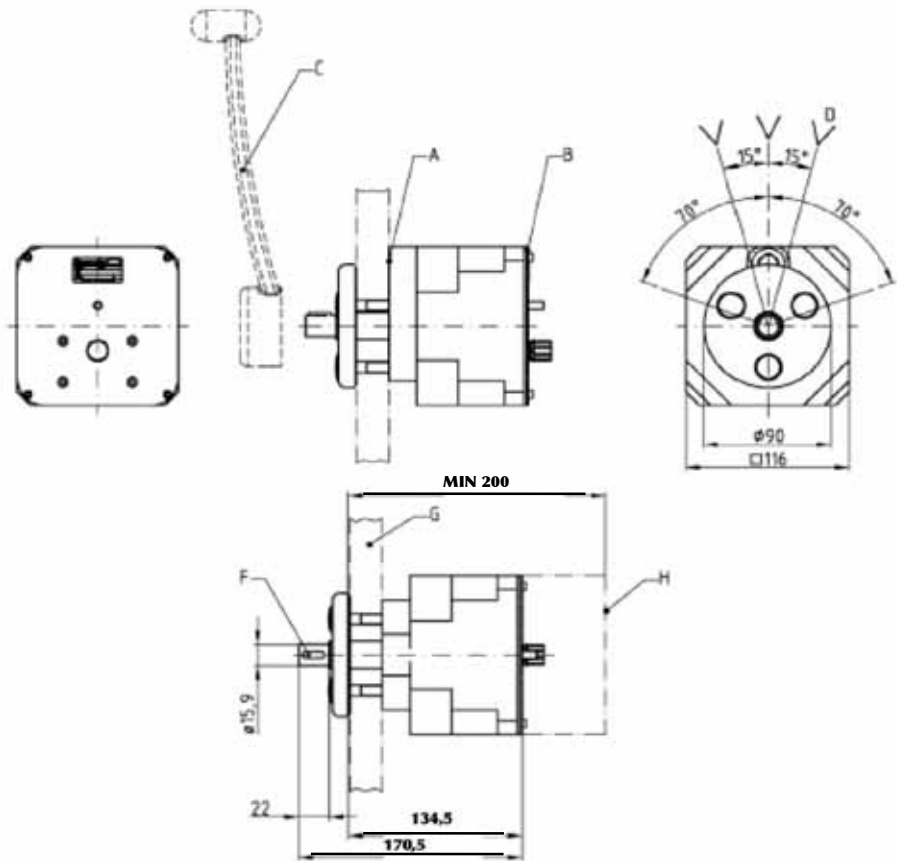


1. control head type 251, 2. operating module type 251, 3. cable M12, 4. handle (has to be ordered separately), 5. installation space for connectors

Control head system – type 251 – Palm Beach

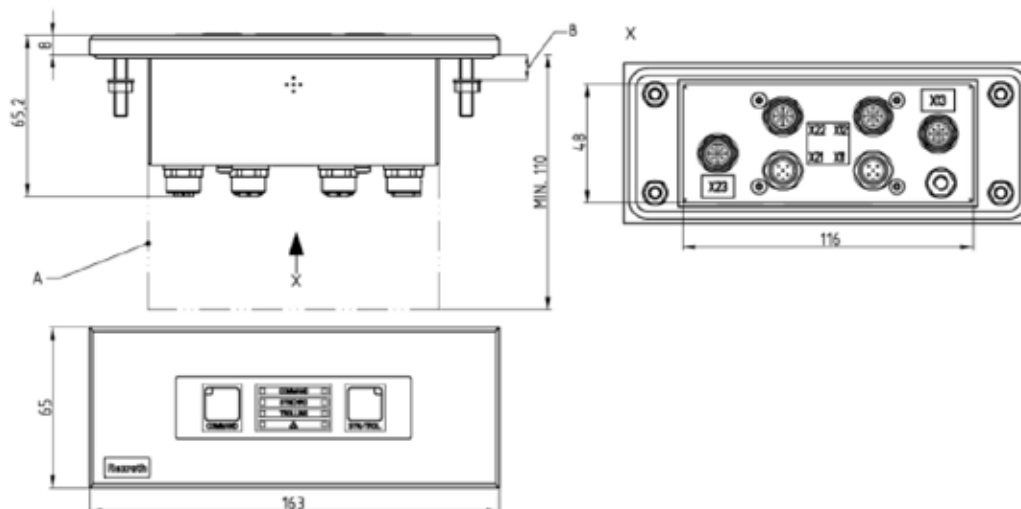
for fixed propeller systems

Figure 2 – technical drawing – control head type 251



A. break force adjustable after removal of cap, B. detent force adjustable after removal of cover, C. lever (figure 4), D. detent positions, E. lever amplitude, F. parallel key form A 3/16" × 3/16" × 5/8" B.S. 46, G. thickness of panel plate 10 mm up to 25 mm; for panel plates thinner than 20mm, distance plates are enclosed, H. installation space for connectors

Figure 3 – technical drawing – operating module type 251



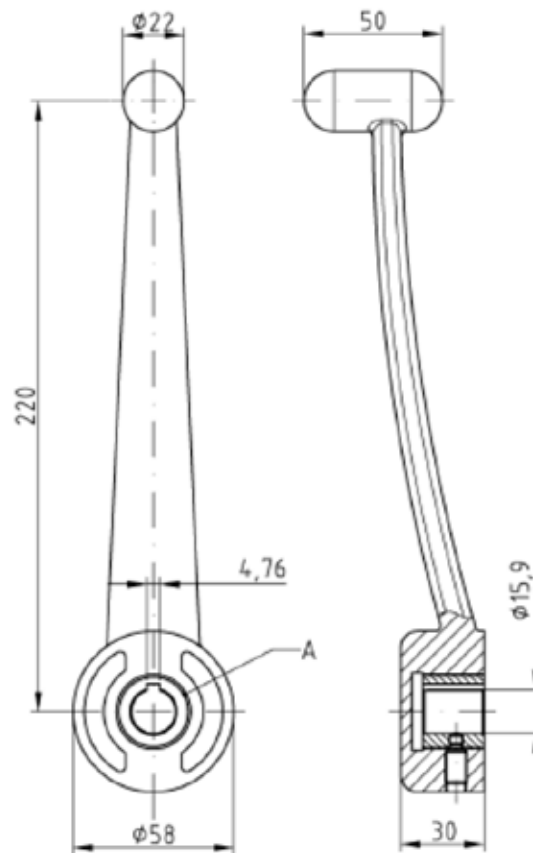
X11, X12, X21, X22 CAN-bus
X13, X23 control head

A) installation space for connectors
B) thickness of panel plate 2mm up to 20 mm

Control head system – type 251 – Palm Beach

for fixed propeller systems

Figure 4 – technical drawing – handle for control head type 251



A handle can be adjusted in steps of 10°.

Panel cutout

