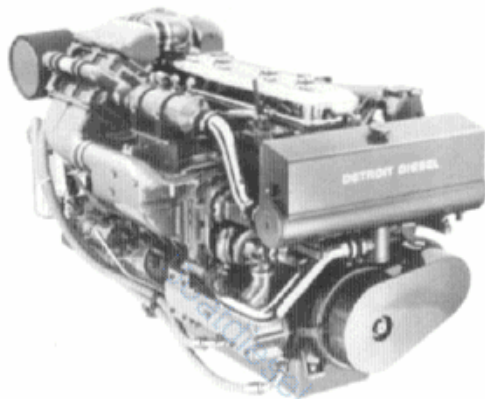


DETROIT DIESEL Series 71

Marine Model 6-71TI 485 BHP

Pleasure Craft



General Specifications

Basic Engine	6-71TI
Model—Port	1062-7300
Starboard	1062-5300
Description	Turbocharged-Intercooled with Bypass Blower
Number of Cylinders	6
Bore and Stroke	4.25 in x 5.00 in (108mm x 127mm)
Displacement	426 cu in (6.9 liters)
Compression Ratio	17:1
Weight (dry)	2850 lbs (1293 kg)

Rated Power Output—Maximum

Gross Power	485 BHP (362 kW) @ 2500 RPM
Net Power	465 SHP (347 kW) @ 2500 RPM

Rated Power Output—Intermittent-Maximum

Gross Power	450 BHP (336 kW) @ 2500 RPM
Net Power	432 SHP (322 kW) @ 2500 RPM

Equipment Specifications

Air Inlet Housing—Electric air shut down, manual optional
Alternator—12 volt, 66 amp, 90 amp optional
Blower—Maxi by-pass
Breather Collector System
Cam—Integral Advance Timing
Engine—Mounting Brackets for both engine and marine gears
Exhaust System—Fresh water - cooled manifolds and turbine housing
Governor—Variable speed
Heat Exchanger—Single pass tube and shell
Intercooler—Raw water
Marine Gear—Detroit Diesel MG507-2, MG507A-2 and MG5091
Turbocharger—High and low mounting options

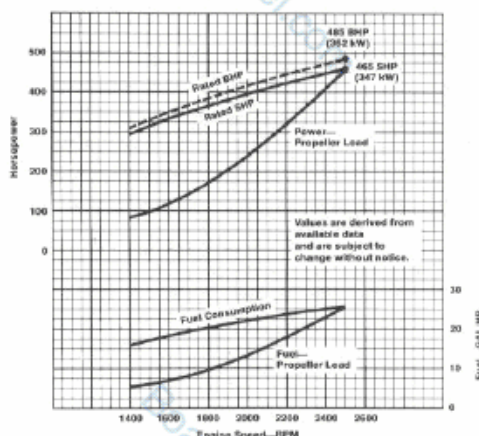
Rating conditions: ISO 3046, SAE J1349, SAE J1228
77°F (25°C) and 29.31 in. Hg. (99kPa) Barometer (Dry)

For a complete listing of standard and optional equipment, consult your authorized Detroit Diesel Corporation representative.

Photograph illustrates a typical marine engine

Performance Curve

Model 6-71TI—Maximum



Rating Explanation

RATED BHP Basic engine gross horsepower.

RATED SHP Net power available at the marine gear output flange.

PROPELLER LOAD indicates horsepower absorbed by a typical fixed pitch propeller.

POWER OUTPUT guaranteed within 5% at rated ambient conditions.

MARINE MAXIMUM The marine maximum rating applies to high performance boats where speed is of primary importance and overall load factors are low. Normal or continuous cruising RPM should be limited to 90% of rated engine RPM, and the use of full rated power should be limited to 10% (average) of operating time. This rating is normally reserved for privately-owned yachts in non-revenue applications with an average annual hour accumulation of 500 hrs.

MARINE INTERMITTENT-MAXIMUM The intermittent-maximum rating is reserved for privately-owned yachts with long-range cruising capability and/or used in seasonal charter operation. Normal or continuous cruising RPM should be limited to 90% of the rated engine RPM and the use of full rated power should be limited to 10% (average) of operating time. All boats in this category are limited to a maximum of 1,000 hours per year.

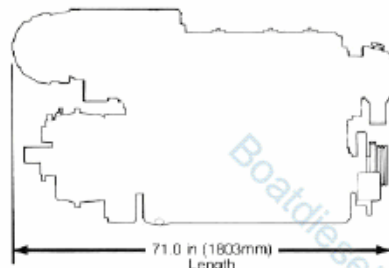
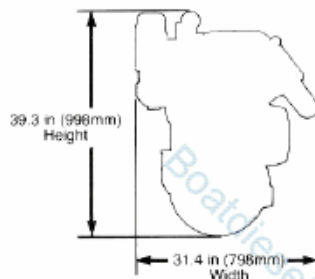
NOTE: Other boats, e.g., fire, police, with an overall duty cycle similar to maximum or intermittent-maximum may be applied at the appropriate rating.

Consult your authorized Detroit Diesel Corporation representative for the rating that will apply to your vessel.

Dimensional Drawing

Model 1062-7300
6-71TI

Approximate dimensions shown.
For complete dimensional information,
refer to installation drawing



DETROIT DIESEL

CORPORATION



13400 Outer Drive, West / Detroit, Michigan 48239-4001

Telephone: 313-592-5000

Telex: 4320091 / TWX: 810-221-1649

Detroit Diesel® and the spinning arrows are registered trademarks of Detroit Diesel Corporation.

4SA320 8902 As technical advancements continue, specifications will change. Litho in U.S.A.