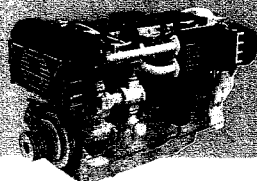


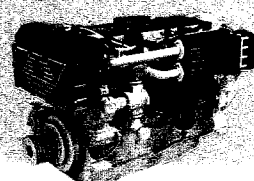
# C18

## PROPULSION ENGINE



Electronic  
Control  
System

Electronic  
Control  
System



# C18 ACERT

## PROPULSION ENGINE

### RATINGS AND FUEL CONSUMPTION

	mhp	bhp	bkW	rpm	U.S. g/h	l/hr	EPA regs.	EU regs.
A	460	454	339	1800	21.7	82.2	T1	RCD
A	596	587	438	1800	29.3	110.8	T1	RCD
B	486	479	357	1800	22.8	86.4	T1	RCD
B	560	553	412	2100	27.3	103.4	T1	RCD
B	609	600	448	1800	28.2	106.6	T1	RCD
B	680	671	500	2100	33.7	127.5	T1	RCD
C	725	715	533	2100	36.8	139.4	T1	RCD
D	885	873	651	2200	44.2	167.5	T1	RCD
E	1015	1001	747	2300	51.7	195.7	T1	RCD

### RATINGS AND FUEL CONSUMPTION

	mhp	bhp	bkW	rpm	U.S. g/h	l/hr	EPA regs.	EU regs.
A	460	454	339	1800	22.6	85.6	T2C	IW/CC2
A	485	479	357	1800	24.0	90.9	T2C	IW/CC2
B	560	553	412	2100	29.4	111.2	T2C	IW/CC2
B	608	600	447	1800	29.9	113.2	T2C	IW/CC2
B	680	670	500	2100	34.8	131.8	T2C	IW/CC2
C	725	715	533	2100	37.7	142.9	T2C	IW/CC2
D	885	873	651	2200	45.0	170.2	T2C	IW/CC2
E*	1015	1001	747	2300	NA	NA	T2R	NC
E*	1150	1136	847	2300	59.4	224.8	T2R	NC

\*Contact local dealer for availability.

NA – not available at time of print.

LE

H

WE

61.3 in/1558 mm

46.4 in/1178 mm

41.6 in/1056 mm

### In-line 6, 4-Stroke-Cycle Diesel

Aspiration	TA, TTA	
Bore x Stroke	5.7 x 7.2 in	145 x 183 mm
Displacement	1106 cu in	18.1 liter
Rotation (from flywheel end)	Counterclockwise	
Engine dry weight (approx) – TTA	3788 lb	1718 kg
	TA	3686 lb 1672 kg

26

LE

H

WE

min.

59.2 in/1505 mm

45.0 in/1144 mm

42.1 in/1068 mm

max.

62.6 in/1591 mm

46.5 in/1182 mm

44.0 in/1118 mm

### In-line 6, 4-Stroke-Cycle Diesel

Aspiration	TA, TTA	
Bore x Stroke	5.7 x 7.2 in	145 x 183 mm
Displacement	1106 cu in	18.1 liter
Rotation (from flywheel end)	Counterclockwise	
Engine dry weight (approx)	3394-4093 lb	1539-1861 kg

27